



HARDNESS TESTING  
**DUROLINE**  
**LV SERIES**

Smart hardness testing with  
smashing performance



# VICKERS & KNOOP

## FULLY AUTOMATIC HARDNESS TESTING

### DESIGN

DUROLINE LV Series are ideal instruments for quality assurance, quality control, research and metallurgical departments to monitor the hardness during fabrication and after heat treatment or welding as well as for the performance analysis on metal parts and new alloys. Typical applications are determining the Vickers micro and macro-hardness of steel alloys and metal components, small precision parts, thin material or wire, coatings and performing case depth determinations (CHD, EHT, NHT) on cross sections both manually or automatically on this advanced hardness tester system. Typical applications are determining the Vickers microhardness of small precision parts, thin material or wire, coatings and performing case depth determinations (CHD, EHT, NHT) on cross sections, both manually or automatic on this advanced hardness tester system.

Recently developed by an international multi-disciplinary team with a wide hardness testing experience, the DUROLINE LV-Series are based on the latest technology available, focused on fast cycle time with high reproduceable accuracy within international standards. The system features a smart and very service-friendly synergy of a robust and proven mechanical construction and integrated electronics system control featured by a fast CANBUS technology and a high-quality Windows based mini-pc.

METKON N-Sure Advanced User Interface Software



DUROLINE LV-Series Microhardness Tester



22" Full HD Capacitive 10-point Multi-Touch desktop monitor



## DUROLINE

# LV1/LV2/LV4

Smart hardness testing with smashing performance  
- NEW GENERATION -

- Versatile micro+macro load range for HV/HK scales from 300gf to 10kgf
- Closed-Loop Controlled load application by load cell technology
- Flexible Windows 10 based hardness test & measurement program METKON N-Sure
- Database generating test results and reports
- Integrated high-res camera 5.0 MP with USB3.0 interface with zoom capability
- Integrated LED light source with controller
- Integrated Windows operated mini-pc, Intel, SSD specs



Robust Mechanical Design

### Magnification range

Combining the excellent performance of the digital camera, LED illumination and software with a series of available objectives, the DUROLINE LV Series provide correct measurement under any test load within the international standards.

Monitoring the hardness testing process significantly improved by using modern user interfacing technology such as 10-point multi-touch screen operation supported by a fast & secure display connection. Combined with top quality components and a high performance mini-pc, this system guarantees customers a solid and accurate performance over many years to come. In this way, the DUROLINE LV Micro/Macro-Vickers hardness tester offers a highly functional and reliable automated indentation test & measurement system.

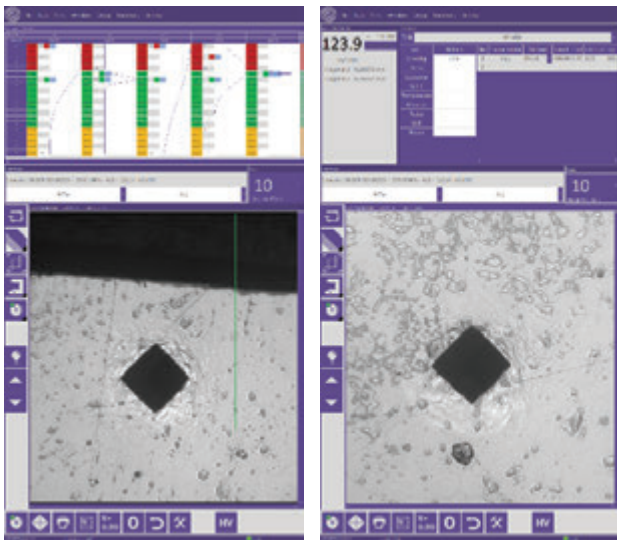
Versatile micro+macro load range for HV/HK scales from 300gf to 10kgf

By selecting between 9 loads steps for micro- and macro-hardness testing in Vickers or Knoop, any specimen can be tested and measured within the applicable standards. Fast and easy setting of loads by touch screen monitor menu icon.

### High precision spindle with motorized option

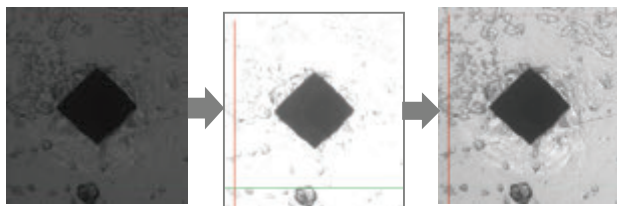
For accurate micro/macro-hardness testing and fast auto-focusing, the elevating speed and backlash of the spindle are critical. By using quality components and design experience, the DUROLINE LV Series spindles guarantee long life without loss of accuracy due to wear and friction, even for automated Z-axis systems.

# AUTOMATIC OPERATION



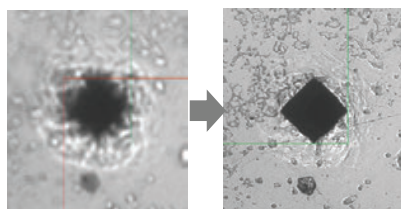
## Automatic Light Brightness

The light brightness is automatically adjusted for the best image quality and the most accurate auto measurements.



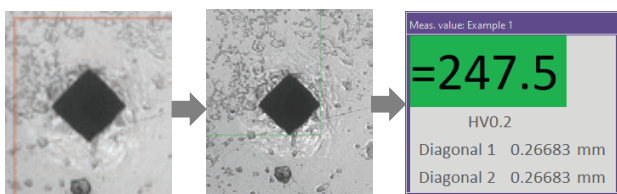
## Automatic Focus (Available on LV2/LV4 models)

DUROLINE LV2 and LV4 models are equipped with motorized spindle and autofocus software module. It automatically sharpens the image in seconds.



## Automatic Evaluation

Diagonals of indentation are measured automatically and hardness value appear on the screen.



## N-Sure TEST & MEASUREMENT SOFTWARE

The METKON N-Sure software program features a flexible Windows based user interface that increases productivity and operator efficiency by automating the test & measurement process and optional motor-stage navigation process. Since the application and removal of the test loads and measurement are fully automatic, repeatability is excellent, testing time is reduced and throughput is increased. As a result, costly and time-consuming rework is eliminated.

For high-volume mounted sample testing, multi-sample mount holders are available for automated test applications to further increase the productivity and throughput of samples.

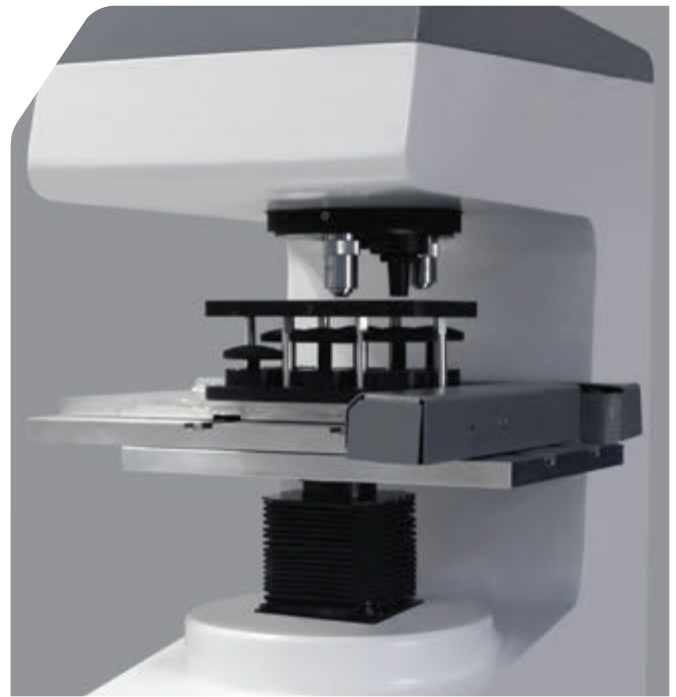
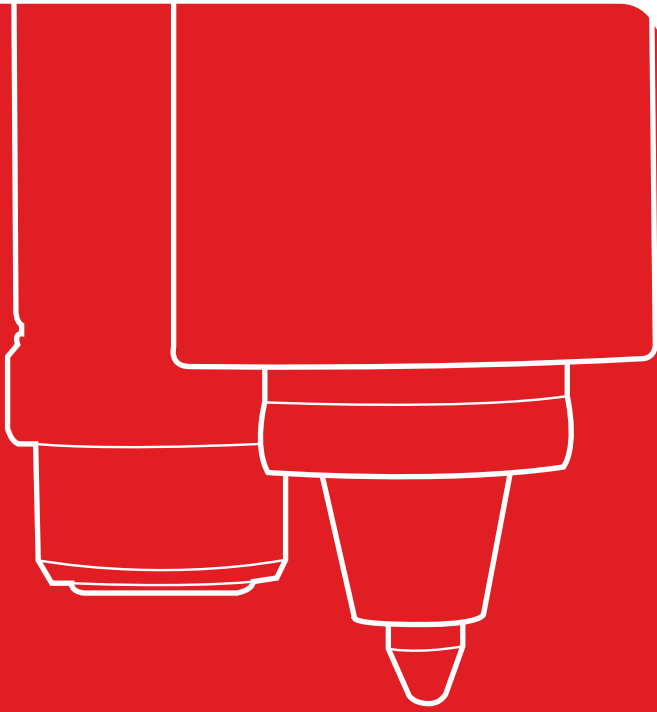
The easy-to-operate test & measurement program, clear images captured by integrated camera and high-resolution display on 22" touch screen monitor provide the lab staff easy access and shared visibility of indent results to analyze and discuss together. Operators are guided by the user-friendly program logic combined with quick system settings such as fast and easy setting of loads by touch screen monitor menu icon. Vickers or Knoop hardness values are automatically generated on screen by use of the standard provided Auto-measurement function.

## Database generating test results and reports

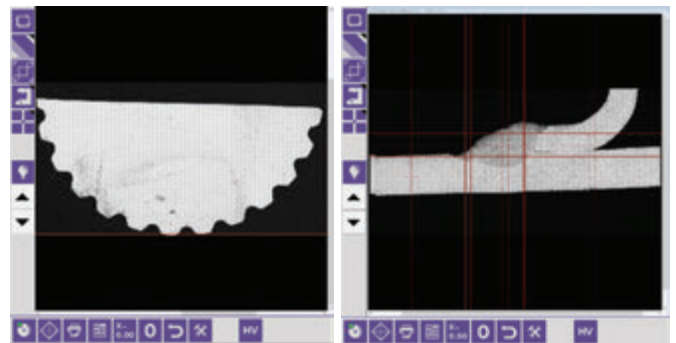
METKON N-Sure software program provides advanced database management of test results, report generation and printing functions. Saving and retrieving measurement data is an absolute requirement when it comes to testing hardness results of critical components in various industrial segments. The N-Sure program ensures that data is safely stored and presented in standard or customized reporting form.



Database generating test results and reports



Motorized XY Stage



### FULLY AUTOMATIC TEST & MEASUREMENT

DUROLINE LV4 is equipped with a high precision motorized XY-stage with 100x150 mm travel range and Autostage software module. It provides multiple tests & measurements fully automatically without operator intervention.

### Scanning Overview Image Feature

Mapping function allows overview image of complete sample surface. The test points are easily determined on the sample with pre-defined or user defined patterns.

### Case Hardening Depth (CHD) Testing

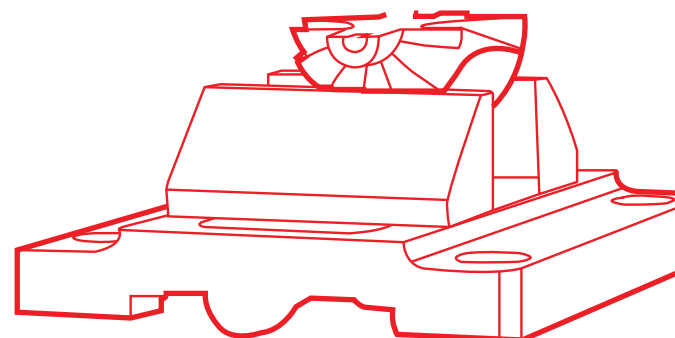
Case Hardening Depth Module is optionally available for all DUROLINE M models.

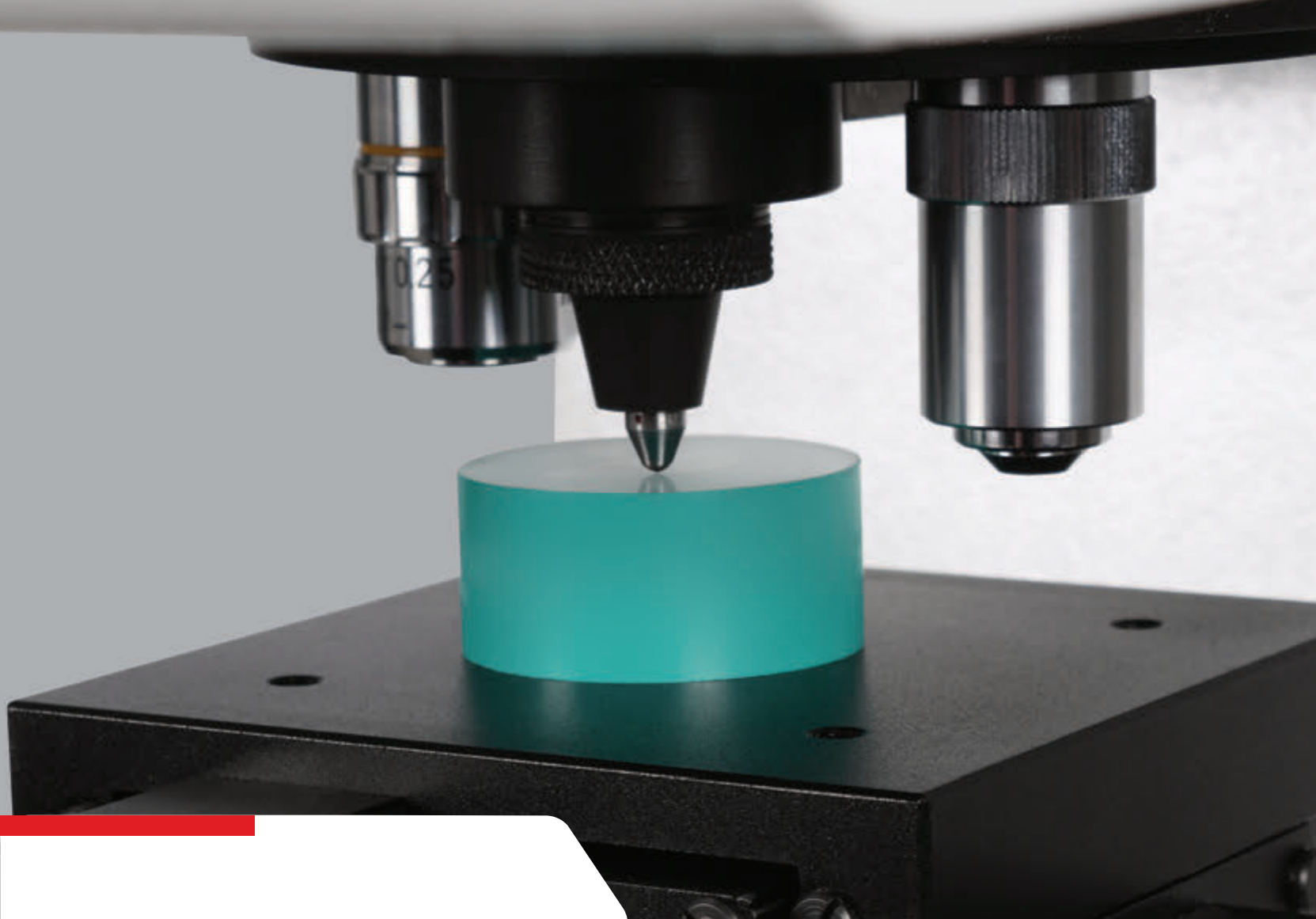
For DUROLINE LV1 and LV2 models, Case Hardening Depth testing is done manually by digital manual XY-Stage.

For DUROLINE LV4, Case Hardening Depth testing is done automatically by motorized XY-Stage.

Distance between measurements, distance between edge and number of measurements can be set easily. Zig zag pattern can also be defined. The measurement pattern can be placed easily on the sample and easily aligned according to edge angle. Once operator set testing parameters and place measurement pattern on the sample, DUROLINE will make indents for all testing points and make hardness measurement automatically without operator intervention (LV4 model).

If necessary, it is always possible to go any measurement point and make manual measurement. After all measurement is done, it is possible to generate test results in report format.



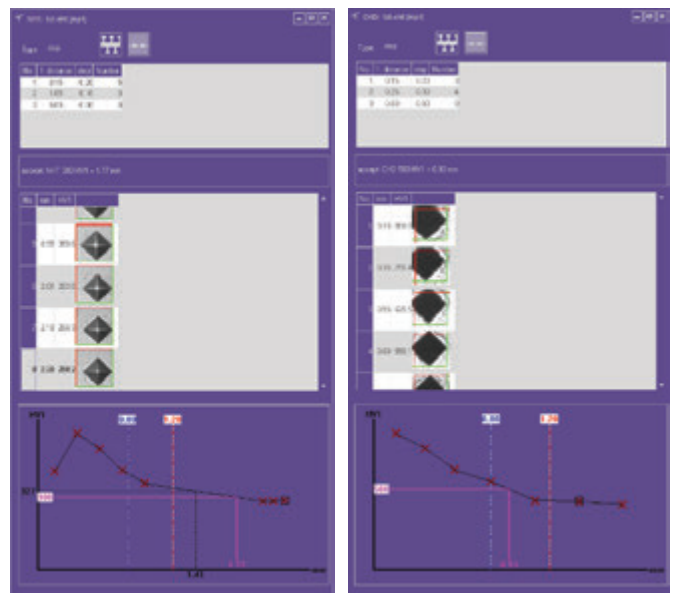
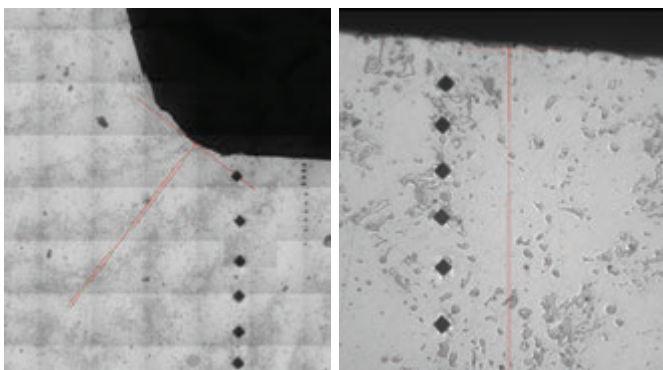


**Comes with Certificated Vickers Indenter**

A Certificated Vickers Diamond Indenter is included as standard for all DUROLINE LV-Series Hardness Testers.

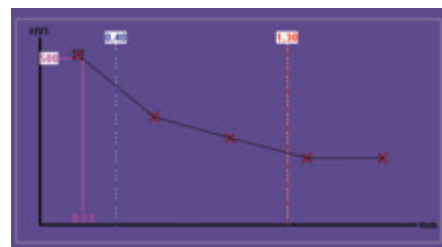
**Factory Certificated Direct and Indirect Calibration Report**

All DUROLINE LV-Series testers are calibrated in Metkon Factory according to DIN EN ISO 6507-2:2018 Vickers hardness test standard.

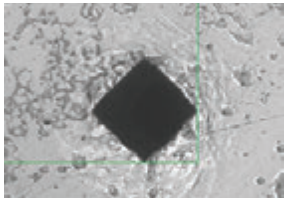


NHT Testing

CHD Testing



# GENERAL FEATURES HIGHLIGHT



## Automatic Test & Measurement

The measurement program provided as standard the Auto-measurement function for fast and repeatable results. This provides extra convenience and time saving. Manual measurement is always possible, as well as re-measurement or deleting single hardness values.



## N-Sure Advanced User Interface Software

The METKON N-Sure software program features a flexible Windows based user interface that increases productivity and operator efficiency by automating the test & measurement process. The User Interface has an immediate recognition and provides a user-friendly flexibility in settings and daily operation.



## 22" Full HD Multi-Touch Desktop Monitor

The easy-to-operate test & measurement program, clear images capture by integrated camera and high-resolution display on 22" touch screen monitor provide the lab staff easy access and shared visibility of indent results to analyze and discuss together.



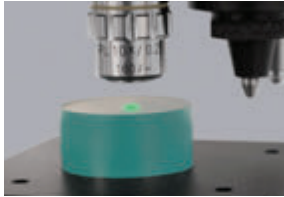
## Integrated Windows Operated Mini-PC

A Windows operated industrial mini-pc is hidden inside the hardness tester. Thus, no additional space is required for your laboratory. It is capable to work 24/7 thanks to its compact, robust design. Equipped with powerful Intel processor and SSD drive to provide smooth and fast operation.



## Integrated High Resolution CCD Camera

A high resolution CCD camera is hidden inside the hardness tester. It has 5.0 MP resolution which provides to capture very clear indentation image for accurate auto measurement. It has USB 3.0 interface to transfer image to monitor without any delay. This means; when you move the specimen that under the objective, the image on the monitor also moves very smoothly and quickly at the same time.



## Automatic Light Brightness

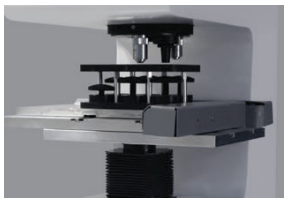
The light brightness is automatically adjusted by the user interface software for the best image quality and the most accurate auto measurements. The hardness tester equipped with powerful LED light source and compact optic system to provide excellent image quality.



## Automatic Focus

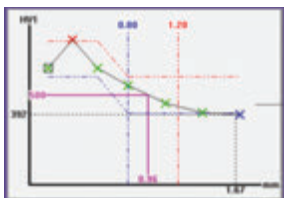
[Available on LV2 and LV4 models]

DUROLINE LV2 and LV4 models are equipped with high precision motorized spindle and Autofocus software module. It automatically sharpens the image in seconds. This provides extra convenience, maximum automation and time saving.



## Motorized XY-Stage [Available on LV4 model]




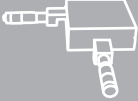



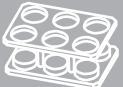



DUROLINE LV4 is equipped with high precision motorized XY-stage with 100x150 mm travel range and Autostage software module. It provides multiple tests & measurements fully automatically without operator intervention. Mapping function allows overview image of complete sample surface. The test points are easily determined on the sample with pre-defined or user defined patterns.



## EHT - CHD Testing

XY-stage with one Slyvac digital micrometer and software module for EHT-CHD testing are optionally available for all DUROLINE LV-Series. Possibility to direct reading of Slyvac micrometer signals by N-Sure software and generate case hardening depth graph.

# ACCESSORIES

<p>Object Lenses, 5X/10X/20X/40X</p>  <p>GR 2041 GR 2042 GR 2043 GR 2044</p>	<p>Vickers/Knoop Indenters</p>  <p>GR 2047 GR 2048</p>	<p>Flat and V-Anvils</p>  <p>GR 2021 GR 2022</p>	<p>Manual XY-Stages</p>  <p>GR 2023 GR 2024</p>	<p>Precision vise (opening 43mm)</p>  <p>GR 2025</p>	<p>Fine specimen holders</p>  <p>GR 2026 GR 2027 GR 2028</p>	<p>Specimen Holder for Mounted Samples Ø25/30/40/50 mm</p>  <p>GR 2031 GR 2032 GR 2033 GR 2034</p>
<p>Multiple Specimen Holder for Multiple Mounted Samples Ø25/30/40 mm</p>  <p>GR 2035 GR 2036 GR 2037</p>	<p>Certificated Standard Test Blocks</p>  <p>GR 2061 GR 2069</p>	<p>Certificated calibration scale glass</p>  <p>GR 2071</p>	<p>Softre Module for EHD, CHD Testing</p>  <p>GR 2081</p>			

## Test stages

The DUROLINE LV-Series feature various stages and fixtures that fit any application. Starting with the basic manual XY-stage with either mechanical or digital micrometers,

the hardness tester can also be equipped with a motorized stage to facilitate single or multi-sample holders. To fix various geometries of specimen that are not mounted, there are several clamping devices available to finish the job quick and precise.

# ACCESSORIES

## Object Lenses

DUROLINE LV equipped with 10x and 40x high quality German made object lenses for maximum image sharpness. 5x and 20x objectives are also optionally available for all kind of testing needs.

## Test Blocks

ISO/DaKKS certificated German made test blocks are optionally available for Indirect verification of tester.

## Indenters

ISO Certificated made Vickers and Knoop indenters are optionally available for most accurate and reliable testing.



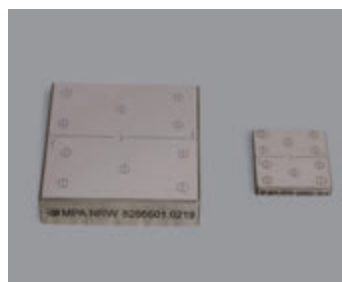
High Precision Manual XY Stages



High Precision Test Anvils



High Precision Sample Holders



ISO/DaKKS Certificated Test Blocks



Certificated Vickers & Knoop Indenters



High Quality Object Lenses with 5X, 10x, 20x and 40x Magnification

# SPECIFICATIONS

## 72 05 - DUROLINE LV1

Vickers/Knoop Micro/Macro-Hardness Tester with Test & Measurement software Windows 10 "N-Sure" including Auto-Measurement module closed loop load cell controlled force application Test Loads:

300gf, 500gf, 1kgf, 2kgf, 3kgf, 5kgf, 10kgf

HV0,3 - HV0,5 - HV1 - HV2 - HV3 - HV5 - HV10

HK0,3 - HK0,5 - HK1 - HK3

in compliance with standard ISO 6507 and ASTM E-384. User Interface by 22" full HD 10-point multi-touch desktop monitor, integrated high resolution 5.0 MP, USB 3.0 CCD camera, automatic measurement with zoom capability and automatic light brightness, with automatic test sequence by motorised turret and load motor force control by closed loop load cell system adjustable internal LED illumination, large sample accommodation area, emergency stop. Automatic voltage setting 100-240 V, 1-phase, 50/60 Hz.

### Standard delivery includes:

Hardness Tester, Desktop Monitor on solid stand, METKON N-Sure software incl. Auto-Measurement module, Certified Vickers diamond indenter, Objective 10x, Objective 40x, 4 adjustable tester feet, Water level indicator, Indenter protection nose, Dust Cover, Power Cable, Monitor Interface Cable, Factory Test Certificate with ISO/ASTM verifications, solid accessories box.

**Note:** Select below the additional XY-stage, anvils, sample fixtures and test blocks

## 72 06 - DUROLINE LV2

Vickers/Knoop Micro/Macro-Hardness Tester with Test & Measurement software Windows 10 "N-Sure" including Auto-Measurement module Motorized spindle Z-Axis up/down movement and Auto-Focus module closed loop load cell controlled force application Test Loads:

1300gf, 500gf, 1kgf, 2kgf, 3kgf, 5kgf, 10kgf

HV0,3 - HV0,5 - HV1 - HV2 - HV3 - HV5 - HV10

HK0,3 - HK0,5 - HK1 - HK3

in compliance with standard ISO 6507 and ASTM E-384. User Interface by 22" full HD 10-point multi-touch desktop monitor, integrated high resolution 5.0 MP, USB 3.0 CCD camera, automatic motorized Z-axis and autofocus of indentations, auto-measurement with zoom capability and indent image brightness, with automatic test sequence by motorised turret and load motor force control by closed loop load cell system adjustable internal LED illumination, large sample accommodation area, emergency stop. Automatic voltage setting 100-240 V, 1-phase, 50/60 Hz.

### Standard delivery includes:

Hardness Tester, Desktop Monitor on solid stand, METKON N-Sure software incl. Auto-Measurement module, Auto-Focus module with motorized Z-axis, Certified Vickers diamond indenter, Objective 10x, Objective 40x, 4 adjustable tester feet, Water level indicator, Indenter protection nose, Dust Cover, Power Cable, Monitor Interface Cable, Factory Test Certificate with ISO/ASTM verifications, solid accessories box.

**Note:** Select below the additional XY-stage, anvils, sample fixtures and test blocks

## 72 08 - DUROLINE LV4

Vickers/Knoop Micro/Macro-Hardness Tester with Test & Measurement software Windows 10 "N-Sure" including Auto-Measurement module, large motorised XY-stage 100x150mm, motorized Z-axis and Auto-focus closed loop load cell controlled force application Test Loads:

300gf, 500gf, 1kgf, 2kgf, 3kgf, 5kgf, 10kgf

HV0,3 - HV0,5 - HV1 - HV2 - HV3 - HV5 - HV10

HK0,3 - HK0,5 - HK1 - HK3

in compliance with standard ISO 6507 and ASTM E-384. User Interface by 22" full HD 10-point multi-touch desktop monitor, integrated high resolution 5.0 MP, USB 3.0 CCD camera, motorized large XY-stage with travel 100x150 mm, automatic motorized Z-axis and autofocus of indentations, auto-measurement with zoom capability and indent image brightness, with automatic test sequence by motorised turret and load motor force control by closed loop load cell system adjustable internal LED illumination, large sample accommodation area, emergency stop. Automatic voltage setting 100-240 V, 1-phase, 50/60 Hz.

### Standard delivery includes:

Hardness Tester, Desktop Monitor on solid stand, METKON N-Sure software incl. Auto-Measurement module, large motorized XY-stage, Certified Vickers diamond indenter, Objective 10x, Objective 40x, 4 adjustable tester feet, Water level indicator, Indenter protection nose, Dust Cover, Power Cable, Monitor Interface Cable, Factory Test Certificate with ISO/ASTM verifications, solid accessories box.

**Note:** Select below for sample fixtures and test blocks

### Software Modules for Vickers/Knoop Hardness Testing

**GR 2081** - Software Module for CHD Testing (EHT)

[Digital XY-Stage (GR2024) or Motorized stage is required]

[To be ordered simultaneously with the machine order]

# SPECIFICATIONS

## Object Lenses for Vickers/Knoop Hardness Testing

- GR 2040** - Optical Kit for 3rd Objective Mount  
(To be ordered simultaneously with the machine order)
- GR 2041** - Object lens 5x
- GR 2042** - Object lens 10x
- GR 2043** - Object lens 20x
- GR 2044** - Object lens 40x

## Indenters for Vickers/Knoop Hardness Testing

- GR 2047** - ISO/ASTM Certificated Vickers diamond indenter
- GR 2048** - ISO/ASTM Certificated Knoop diamond indenter

## Anvils and XY-Stages for Vickers/Knoop Hardness Testing

- GR 2021** - Flat anvil diameter 80mm
- GR 2022** - Flat Anvil with V-groove, diameter 80mm
- GR 2023** - Analogue Manual XY-stage 100x100mm, travel 25x25mm, with two analogue micrometers
- GR 2024** - Digital Manual XY-stage 100x100mm, travel 25x25mm, with one digital Silyac micrometer incl. cable and one analogue micrometer (GR 2081 Software Module is required for CHD/EHT testing) (To be ordered simultaneously with the machine order)

## Specimen Holders for Vickers/Knoop Hardness Testing

- GR 2025** - Precision vise (opening 43mm)
- GR 2026** - Thin specimen holder
- GR 2027** - Fine specimen holder (Horizontal type)
- GR 2028** - Fine specimen holder (Vertical type)
- GR 2031** - Specimen holder for Ø25 mm specimens
- GR 2032** - Specimen holder for Ø30 mm specimens
- GR 2033** - Specimen holder for Ø40 mm specimens
- GR 2034** - Specimen holder for Ø50 mm specimens
- GR 2035** - Multiple specimen holder for 6xØ25 mm specimens
- GR 2036** - Multiple specimen holder for 6xØ30 mm specimens
- GR 2037** - Multiple specimen holder for 6xØ40 mm specimens

## Verification Tools for Vickers/Knoop Hardness Testing

- GR 2061** - ISO Dakks Germany Certified standard block 200HV0.3 (30x30mm)
- GR 2062** - ISO Dakks Germany Certified standard block 450HV0.3 (30x30mm)
- GR 2063** - ISO Dakks Germany Certified standard block 700HV0.3 (30x30mm)
- GR 2064** - ISO Dakks Germany Certified standard block 200HV1 (30x30mm)
- GR 2065** - ISO Dakks Germany Certified standard block 450HV1 (30x30mm)
- GR 2066** - ISO Dakks Germany Certified standard block 700HV1 (30x30mm)
- GR 2067** - ISO Dakks Germany Certified standard block 200HV5 (60x60mm)
- GR 2068** - ISO Dakks Germany Certified standard block 450HV5 (60x60mm)
- GR 2069** - ISO Dakks Germany Certified standard block 700HV5 (60x60mm)
- GR 2071** - ISO Certificated calibration scale glass.

\*Other standard test blocks are on request

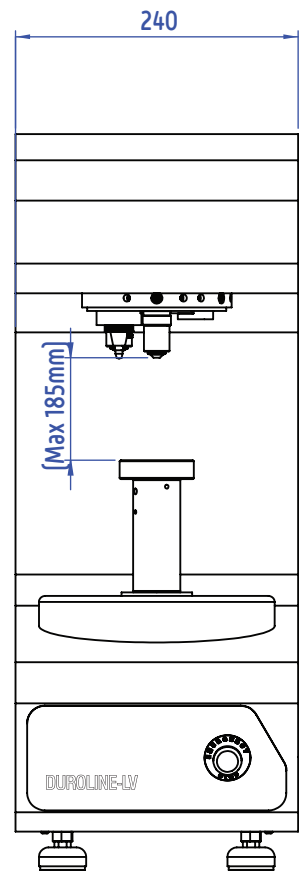
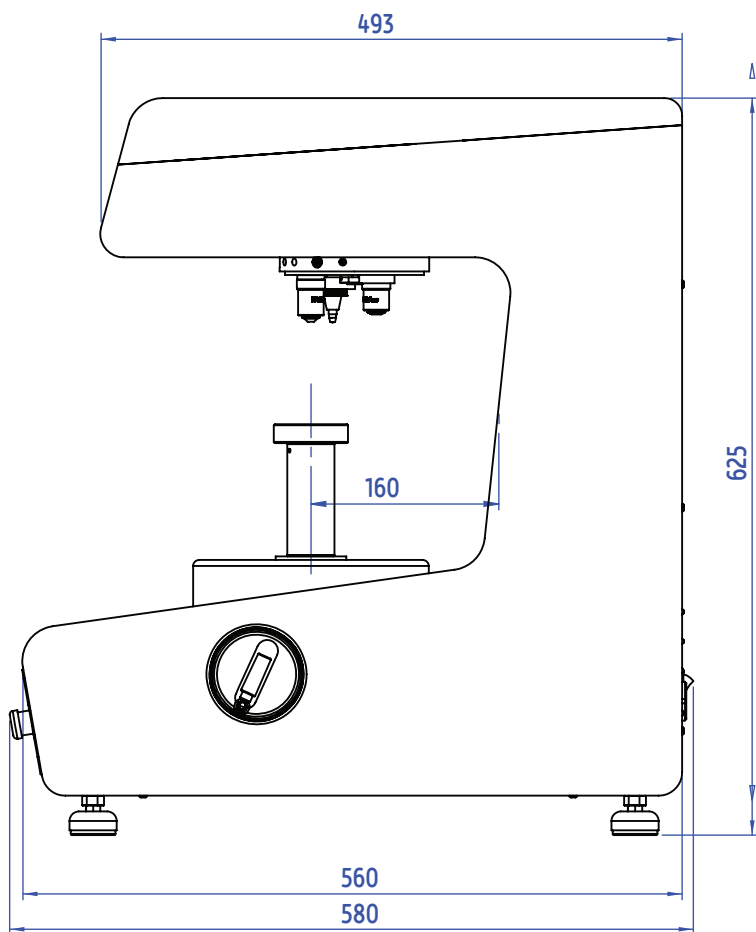
\* Other voltages and frequencies available upon request.  
Please state when ordering. All specifications are subject to change without notice.

# SPECIFICATIONS

ORDER NO	72 05		72 06		72 08	
MODEL NO	DUROLINE LV1		DUROLINE LV2		DUROLINE LV4	
Hardness Scales	Vickers HV as per ISO 6507, ASTM E384, E92		HV0,3 - HV0,5 - HV1 - HV2 - HV3 - HV5 - HV10			
	Knoop HK as per ISO 4545, ASTM E384, E92		HK0,3 - HK0,5 - HK1 - HK3			
	Hardness conversions to other scales		As per ISO 18265			
Test Loads	Test Loads [gf]		300gf, 500gf, 1kgf, 2kgf, 3kgf, 5kgf, 10kgf			
	Test Loads [N]		2,942N - 4,904N - 9,807N - 19,631N - 29,420N - 49,033N - 98,067N			
	Test Load Accuracy		"> 200gf: +/- 1,0% As per ISO standard [and ASTM E-384, JIS B7725, JIS B7734]"			
	Test Load Dwell Time		"from 5 - 99 sec with 1 sec increments As per ISO standard [and ASTM E-384, JIS B7725, JIS B7734]"			
	Test Load Application Speed		"> 200gf: < 0.200 mm/s As per ISO standard [and ASTM E-384, JIS B7725, JIS B7734]"			
	Load Force Application		Motorized force application with closed loop load cell control, Automatic load, dwell, unload			
	Load Selection		By METKON N-Sure test settings			
Turret	Turret Configuration		Motorized 3-mount turret: 1 indenter, 2 objectives Position Auto-indication			
	Indenter		Including 1 Vickers Diamond Indenter			
	Objectives		"Standard objectives 10X, 40X, optional 5X, 20X [Made in Germany] Image capture by integrated CCD-camera [no eyepiece]"			
Optic System	Sample Image Capture		By Integrated CCD Camera, 5.0 MP, USB 3.0 [Made in Germany]			
	Indent Measurement Resolution		0,00002 mm [0,02 µm]			
Illumination	Illumination Source		Built-in LED Light Source			
	Automatic Brightness Control		Standard for highest contrast and sharpnes			
Spindle	Z-axis [Spindle Vertical Movement]		Manual	Motorized	Motorized	
	Auto-Focus AF		Not Available	Standard	Standard	
"Motorized XY-Stage"	Motorized XY-Stage [for Fully Automatic Multiple Test & Measurements]		Not Available	Not Available	Standard	
	Travel Distance		Not Available	Not Available	100x150 mm	
Controller System	Controller		"Built-in Windows operated mini-PC, communicates the hardness tester electronics by CANBUS Protocol"			
	Interface Network		Interface network USB [x4], Displayport [x2], LAN [x1] and Wireless LAN			
	Auxilliary		Optional Keyboard, Mouse [wireless]			
	Monitor		"External 22" Full HD Capacitive 10-point Multi-Touch Desktop Monitor, IPS Panel, Antistatic Shield, Tilttable, Integrated Power Adaptor"			
User Interface	Operating System		Windows 10			
	User Interface Software		METKON N-Sure			
	Test Settings		Scale, Load Dwell Time, Start, Turret positioning, Hardness Conversion, Illumination, Screen preference settings, Alerts for errors			
Tester Body	Measurement Settings		Surface Image capture, Indentation capture, Manual measurement and Auto-measurement, Single indents, Manual pattern, Preset pattern, CHD, EHT, NHT, GO/NG judgement, Statistics, Conversion, Cylindrical correction, Language, Database, Test Reports with image analysis data, Data export, User management, Service and Calibration Settings			
	Operational Environmental Conditions		"Ambient Operating Temperature Range: 23°C +/- 5°C Ambient Humidity Range: RH 40% to 70% relative humidity, non-condensing"			
	Dimensions, WxDxH		240x560x625 mm			
	Specimen Accommodation		Vertical 185 mm, Horizontal [throat depth] 160mm			
	Weight		65 kgs			
Mains		100-240 V, 1-phase, 50/60 Hz, autosecting				

MODEL NO	Automatic Test & Measurement	Automatic Light Brightness Control	Motorized Z-Axis Spindle	Automatic Focus	Motorized XY-Stage
DUROLINE M1	✓	✓	✗	✗	✗
DUROLINE M2	✓	✓	✓	✓	✗
DUROLINE M4	✓	✓	✓	✓	✓

# DIMENSIONS





**METKON INSTRUMENTS INC.**  
Demirtas Dumlupinar  
Organize Sanayi Bolgesi  
Ali Osman Sonmez Cd.  
No: 14 Bursa | TURKEY  
Phone : +90 (224) 261 18 40  
metkonsales@metkon.com

**METKON USA INC.**  
325 New Neely Ferry Rd Suite E2,  
Mauldin, SC 29662 Greenville  
Phone: (864) 399-9009  
sales-us@metkon.com